



! Please note, these images are for illustration purposes only

Astoria

✔ Designed with convenience in mind, this design showcases nestled utilities with a connected Kitchen, Scullery, Walk in Pantry and Laundry.

- ➕ Additional rooms:
- Theatre
 - Double Ensuite
 - Walk-In-Robe
 - Walk-In-Pantry
 - Scullery
 - Activity

m² Areas

Living 187m
Garage 35m
Alfresco 16m
Porch 4m

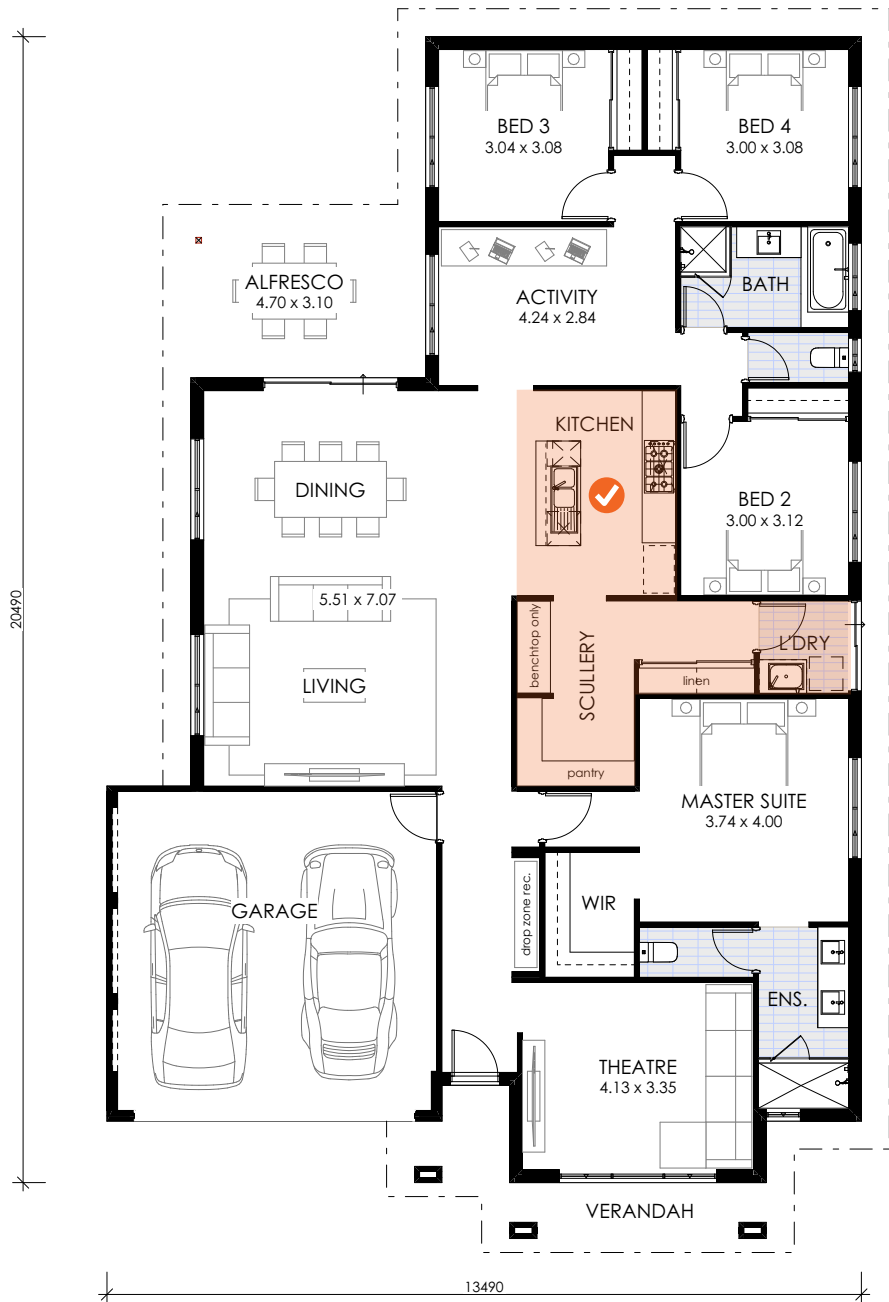
Total Area = 232m
Lot Size = 15 m x 25 m

✉ Email
enquiries@zirconliving.com.au

☎ Phone
(08) 9262 7488

📷 Instagram
@zircon.living

📘 Facebook
www.facebook.com/zirconliving

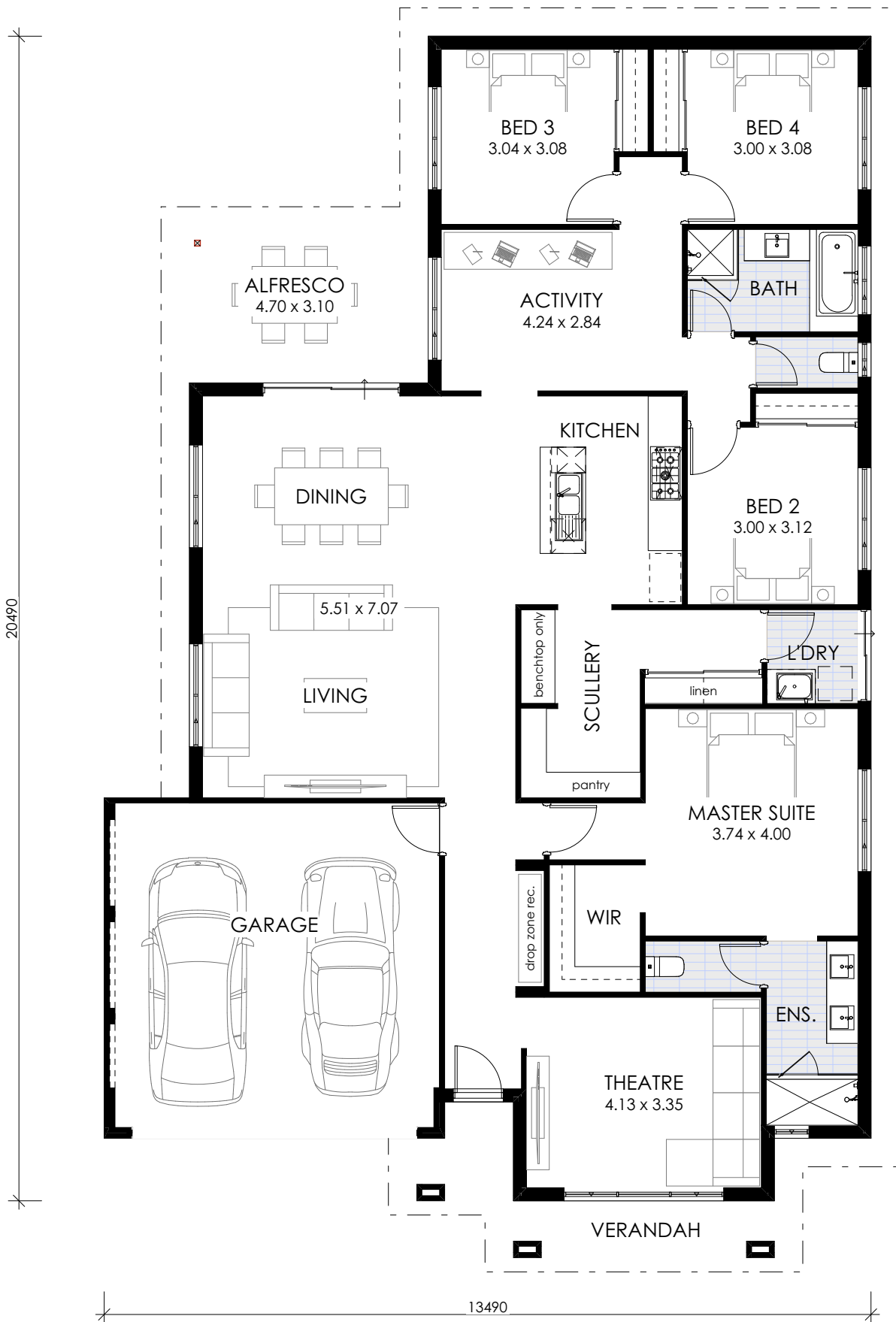


Zircon Living

BC 5975

ASTORIA

🚗 4 🏠 2 🚚 2



20490

13490